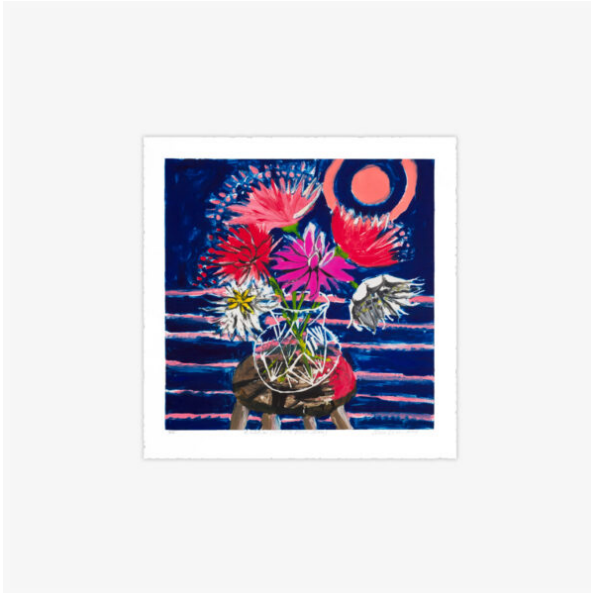


ANN CRAVEN

DAHLIA'S (FOR THE PINK MOON), VII



CATEGORY: [Monotypes](#)

SPECIFICATIONS:

DESCRIPTION

This unique series of 11 monotypes entitled *Dahlia's (For the Pink Moon)* capture moments rooted in the artist's memories, personal experiences, and inspirations. Whenever Craven paints flowers they are depicted in one of her mother's crystal vases and in these series of prints the vase sits on top of a stool with a background of the moon rising, an ever-present symbol in the artist's lexicon.

The flowers represent an ongoing conversation with her mother and is a way of bringing her along on the journey of the artist's life. In these works, the artist also reflects on the artist Marsden Hartley who painted flowers in vases often with a background of curtains and the sea, both personal symbols for Hartley as the moon and vases are for Craven.